



FIRE HYDRANT PUMPER ADAPTORS

"AE" fire hydrant pumper adaptors are manufactured within a strict quality controlled environment to ISO 9001:2015. These pumper adaptors are generally installed in fire hydrants to facilitate the fireman to draw or pump water into the fire main ring system. There are several types and configuration of pumper adaptor to suit national standard and customer requirements.

UNDERGROUND FIRE HYDRANT

"AE" Type 2 screw-down type underground fire hydrant is manufactured within a strict quality controlled environment to ISO 9001 : 2015, conforming to the requirements of BS750 : 2006 standard. Each and every fire hydrant is subjected to a hydraulic test pressure of 326 PSI . The inlet connection of the fire hydrant is 80mm dia BS4504 PN16 flange and the outlet is a single 65mm dia Male LVT or LRT screw.

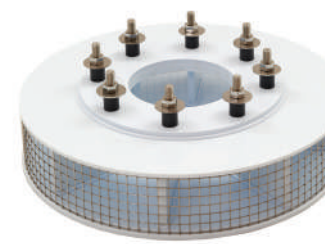


SPECIALITY VALVES

"AE" speciality valves are customised products manufactured for fire fighting purpose and utilised in projects where special design criteria warrant such valves. They are produced within strict quality controlled environment to ISO 9001:2015 guidelines.

VORTEX INHIBITORS

"AE" Vortex Inhibitors are provided to attachment to pump suction pipes installed in cleaned water storage tanks. They are design to eliminate any vortex within the pump suction pipes, hence ensuring the pump is fully primed at all times. This prevents the pump from being damaged, ensuring maximum delivery is achieved.



DIVIDING BREECHINGS

"AE" dividing breechings are generally manufactured to BS336 and fitted with instantaneous connections. They are produced within a strict quality environment to ISO 9001:2015 standard. They come with and without individual lever ball valve shut-off control outlets. Other national standard or customer's requirement regarding for different connections are available.

PILLAR HYDRANTS

"AE" Pillar Hydrants are generally manufactured according to BS EN14384:2005 standard within a strict quality controlled environment to ISO 9001:2015. There are several models and configurations for the 2-Way and 3-Way pillar hydrant design. The outlets of the above models can be customised to suit other national standards and customer's requirement.



ASSOCIATED ENTERPRISES (S) PTE LTD

BLOCK 28, SIN MING DRIVE #01-173

SINGAPORE 575702

TEL: (65) 6455 0555 FAX: (65) 6455 0505

EMAIL: enquiry@aespl.com.sg

WEBSITE: www.aespl.com.sg



ASSOCIATED ENTERPRISES
Since 1968

Fire Protection Equipment

A Trusted Brand For Over 40 Years





FIXED TYPE FIRE HOSEREEL

"AE" 19mm and 25mm Manual and Automatic Fixed Type fire hose reels are manufactured strictly in conformity to EN671-1:2012 standard specifications. They are produced within strict quality controlled environment to ISO 9001:2015.

The hose reels can be fitted with different lengths of fire reel hoses conforming to EN694:2014 standard ranging from 20M, 25M, 30M and 36M (for 19mm only). There are two types and selection of nozzles for these hose reels. The "Jet Stream" with 6mm orifice (for both 19mm and 25mm hose reels) and adjustable "Spray/Jet" with 6mm orifice (for 19mm hose reel) and 8mm orifice (for 25mm hose reel).

SWING TYPE FIRE HOSEREEL

"AE" 19mm and 25mm Manual and Automatic Swing Type fire hose reels are manufactured strictly in conformity to EN671-1:2012 standard specifications. They are produced within strict quality controlled environment to ISO 9001:2015.

The hose reels can be fitted with different lengths of fire reel hoses conforming to EN694:2014 standard ranging from 20M, 25M, 30M and 36M (for 19mm only). There are two types and selection of nozzles for these hose reels. The "Jet Stream" with 6mm orifice (for both 19mm and 25mm hose reels) and adjustable "Spray/Jet" with 6mm orifice (for 19mm hose reel) and 8mm orifice (for 25mm hose reel).



STANDARD FIRE HOSEREEL CABINET

"AE" Fig.300, Fig.310 and Fig.320 standard type fire hose reel cabinets are fabricated of electro-galvanised steel material and epoxy/polyester powder coated "Red" finished. Optional aluminium or stainless steel materials are available upon request. The hose reel is mounted onto a flat wall or column and the cabinet is then installed as the rear is opened.

FULL PANEL FIRE HOSEREEL CABINET

"AE" full panel type fire hose reel cabinet is fabricated of electro-galvanised steel material and epoxy/polyester powder coated "Red" finished. Optional aluminium or stainless steel materials are available upon request. The hose reel is mounted inside the cabinet.

SCREW INLET GLOBE PATTERN HYDRANT VALVES

"AE" screw inlet globe pattern low pressure hydrant valves are manufactured strictly in accordance with BS5041:Part1:1987. There are four different configurations, Fig.128 (Oblique), Fig.129 (Right- Angle), Fig.130 (Horizontal) and Fig.131 (Bib-Nose). It has a dual seat design valve closure in which the primary is rubber to metal and secondary is metal to metal. Every valve is pressure tested to 16.5 bars and 22.5 bars for the seat and body respectively. It is suitable for on-shore and off-shore fire protection.



FLANGE INLET GLOBE PATTERN HYDRANT VALVES

"AE" flange inlet globe pattern low pressure hydrant valves are manufactured strictly in accordance with BS5041:Part1:1987. There are four different configurations, Fig.132FG (Right-Angle), Fig.133FG (Oblique), Fig.134FG (Horizontal) and Fig.137FG (Bib-Nose). It has a dual seat design valve closure in which the primary is rubber to metal and secondary is metal to metal. Every valve is pressure tested to 16.5 bars and 22.5 bars for the seat and body respectively. It is suitable for on-shore and off-shore fire protection.



HIGH PRESSURE REGULATING HYDRANT VALVES

"AE" high pressure "Bib-Nose" hydrant valves are manufactured strictly in accordance with BS5041:Part1:1987. It comes in Male BSPT screw (Fig.138) and standard BS4504 PN16 flange (Fig.139FG). Optional flanges, eg., BS10 Table D or E, ANSI #150, etc., are available upon request. Every valve is pressure tested to 22.5 bars and 30 bars for the seat and body respectively. The regulated outlet pressure ranges from 3.5 bars to 8 bars. It is suitable for on-shore high rise buildings and off-shore oil, gas, chemical, power, incinerator plants fire protection.



GATE PATTERN DRY RISER LANDING VALVES

"AE" gate pattern dry riser landing valves are manufactured strictly in accordance with BS5041:Part2:1987. It comes in female BSPT screw (Fig.140) and standard BS4504 PN16 flange (Fig.141FG). Optional flanges, eg., BS10 Table D or E, ANSI #150, etc., are available upon request. Every valve is pressure tested to 16.5 bars and 22.5 bars for the seat and body respectively. It is installed in a building dry riser system.



2-WAY AND 4-WAY BREECHING INLET

"AE" 4-ways (Fig.135) and 2-way (Fig.136) breaching inlets are manufactured strictly in accordance with BS5041:Part3:1975. The internal of the breaching inlet bodies are epoxy coated to provide good corrosion resistant protection. Every breaching inlet is pressure tested to 20 bars and 1.7 bars as required by the standard.



BREECHING INLET CABINET

"AE" 2-ways and 4-ways breaching inlet cabinets are fabricated from electro-galvanised steel material in accordance with BS5041:Part5:1974. It is finished in "Red" epoxy/polyester powder coated. They come in "surface" (Figs. 200 & 220) or "recessed" (Figs 210 & 230) mounted designs.



FIRE HOSE CABINET AND CRADLE

"AE" fire hose cabinet, fixed and swing type cradles are fabricated from electro-galvanised steel and finished in "Red" epoxy/polyester powder coated. The design and construction are robust, elegant and with high quality finished.



CHALLENGER FIRE HOSE

"Challenger" Model C-700 fire hose is manufactured in accordance with BS6391:Type 3 It is heat, oil, grease, alkali, high abrasion and weather resistant. It is a premium hose suitable for use in Oil, Gas & Chemical plants, fire brigade, major industrial sites, aviation and marine industry. The working and burst pressures are 15 bars and 45 bars respectively.



FIRE EXTINGUISHER

"PROTEC" ABC Dry Chemical, CO2, Foam, Water and Wet Chemical fire extinguishers are manufactured in strict quality control to EN 3 Parts 7, 8 and 9 standard specifications. They are made of steel cylinders finished in "Red" Epoxy/Polyester powder coated and fitted with brass chromed valves. The fire extinguishers are approved by LPCB UK and SETSCO Singapore.

FIRE EXTINGUISHER CABINET

"AE" fire extinguisher cabinets are fabricated from electro-galvanised steel and finished in "Red" epoxy/polyester powder coated. The design and construction are robust, elegant and with high quality finished. Stainless steel SUS304 and SUS316 are available on request.

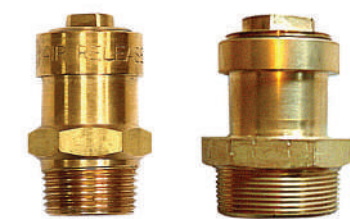


MOBILE FIRE EXTINGUISHERS

"PROTEC" stored pressure type ABC Dry Chemical, CO2 and Foam type mobile fire extinguishers are manufactured in strict quality control to BS EN 1866-1:2007 standard specifications and approved by LPBC UK and SETSCO Singapore. The cylinders are made of steel finished in "Red" Epoxy/Polyester powder coated and fitted with brass chromed valves.

AUTOMATIC AIR RELEASE VALVE

"AE" automatic air release valves are manufactured from solid brass bar. Stainless steel 304 or 316 materials are available upon request. It is a ball float type design and generally installed in fire hose reel and dry riser systems. It comes in 25mm and 50mm diameter male BSPT screw inlet connections.



BRANCHPIPE & NOZZLES

"AE" standard branchpipes are manufactured according to BS336 has an inlet 2-1/2" male instantaneous and an outlet threaded 1-3/4" male BSP which can be attached to a "Jet" stream or "Jet/Spray" or "Jet/Fog" nozzle tip. Fig.151 branchpipe is fitted with "Jet/Spray" nozzle tip.



DELIVERY HOSE COUPLINGS AND ADAPTORS

"AE" delivery hose instantaneous couplings are manufactured in accordance with BS336:1985 standard. The couplings are produced in LG2 gunmetal or BS1490 aluminium alloy materials. Other types of couplings and adaptors are also manufactured in accordance to customers' requirement.